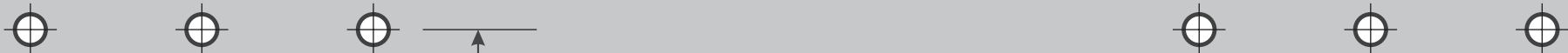


Note: When mounted, the top edge of the SUBstage will be about 9/16" above the top edge of the upper bracket.

Upper Bracket



16.0"

SUBstage 250/100 Wall-Mount Screw Hole Template for SSWB1 Mounting Bracket Kit

4.4"

Lower Bracket



Rubber Bushing

Note: When mounted, the bottom edge of the SUBstage will be about 1-5/16" below the bottom edge of the lower bracket.

IMPORTANT WARNING: *screwed solidly into wall. Do not screw into drywall or plaster. You can screw into wood.*
WARNING: *Make sure the SUBstage is mounted to a solid wall as they may vibrate.*
Pro Tuning Tip: *Listen to the SUBstage at low volume and phase BEFORE adjusting the end caps from the package into approximate position. Do not use the SUBstage on a bed or sofa. Note, once unmounted, it will have to be UN-mounted and these settings*

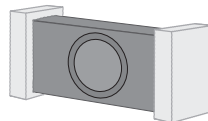
will be

Template Bracket Kit

IMPORTANT WARNING: *This bracket assembly MUST be screwed solidly into wooden studs. Use this bracket ONLY if you can screw into wooden studs.*

WARNING: *Make sure all pictures/etc. are well secured to the wall as they may vibrate loose and rattle.*

Pro Tuning Tip: *Listen and tweak the settings for crossover, volume and phase BEFORE final wall-mounting. Use the foam end caps from the packaging to temporarily wedge the unit into approximate position behind a chair or sofa. Note, once unit is wall-mounted, it will have to be UN-mounted to change these settings*



Rubber Bushing



soundmatters

soundmatters international
tel: 775 981.1460
fax: 775 981.1465
www.soundmatters.com

SUBstage 250/100 Wall-Mount Instructions for SSWB1 Mounting Bracket Kit

Read this before you begin

IMPORTANT: Because the SUBstage generates a tremendous amount of low-frequency energy, this bracket assembly **MUST** be screwed solidly into wooden studs. It is **NOT** sufficient to screw into metal studs, nor only into plaster or drywall. (Obviously, screwing *through* the wall surface and into studs is the right thing.) Using butterfly-style or other anchors in drywall will **NOT** keep the bracket secure for long, and are most definitely **NOT** suitable. The bottom line: use this bracket **ONLY** if you can screw into wooden studs.

Read through all the instructions and look at the illustrations before you begin. Having a good overview will make the project proceed more smoothly and the final installation will be professional quality.

Contents

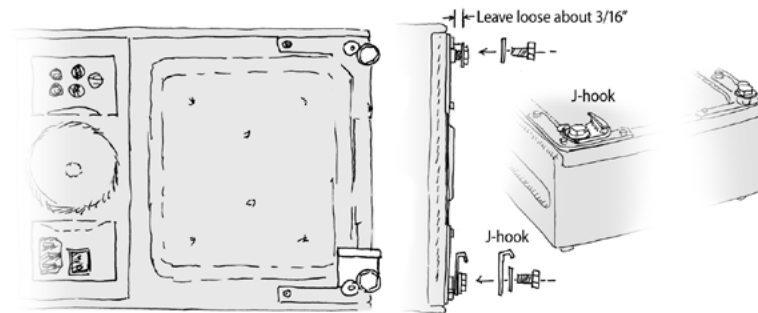
- 1 Upper Bracket
- 1 Lower Bracket with attached Rubber Bushings
- 4 Bolts 1/4-20 x 3/8"
- 4 Washers 3/16"
- 1 J-hook (left side)
- 1 J-hook (right side)
- 4 Deck Screws (8 ga x 3")
- 1 Instruction Sheet
- 1 Template Sheet

Tools needed

- Stud finder (*do NOT attempt to install this bracket if it cannot be securely attached to wooden studs with two screws per bracket*)
- Drill and drill bit (1/8" or smaller for pilot holes)
- Phillips screwdriver
- 11mm (preferred) or 7/16" open-end wrench
- Level
- Pencil and tape

A. Mount Hardware on Substage

1. Unscrew and remove the four feet.
2. In their places: on top, screw in bolt and washer (**leave loose with about 3/16" space**); then, on bottom, screw in bolt, washer and J-hook (**tighten firmly**).



B. Align Template on Wall

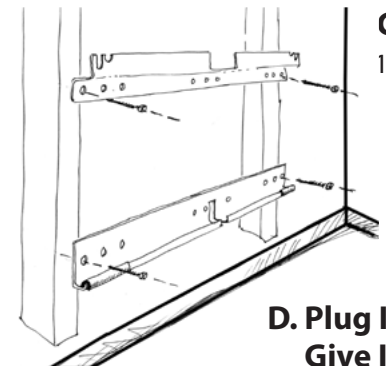
1. Use stud finder. Carefully find centers of appropriate studs, then lightly mark position on wall in pencil. (Typically, studs in residences are on 16" centers. The outermost holes on the wall-mount brackets are exactly 16" apart. What a coincidence!)



Use a stud finder to find the studs, then use vertical lines on template to carefully align holes with studs.

2. Tape template to wall at the desired mounting height, carefully aligning two top holes and two bottom holes with the centers of studs. Be sure template diagram is level. Use vertical dashed lines to align template to centerline of studs.

3. Drill a thin pilot hole (1/16" - 1/8") in the wall at the position. If drill successfully hits a stud, drill to lower left. Drill each hole into wall.
4. Now go to upper right position. If drill successfully hits a stud, drill to lower right. Drill each hole into wood above the bracket.
5. Remove template from wall.



D. Plug It In, Give It a Test Run

1. Securely plug-in source into power outlet. Turn on power switch because the unit is powered on all the time. The unit is powered on where you want them before.

Pro tuning tip: Listen and tweak the sound. **BEFORE final wall-mounting.** Use the foam to temporarily wedge the unit into approx. position behind a chair or sofa. Note, once unit is mounted, it will have to be UN-mounted to change position.

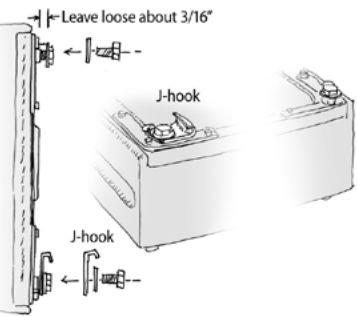
E. Hang It, then Secure It

1. Make sure the cables are routed through the cutouts in the bracket.
2. See the illustrations below. To install the brackets, hold the unit about 1/2" away from the brackets, then move it straight up until it catches on the rubber-bushings. Then, tighten the two upper bolts on the upper bracket. The washers should be tight against the bracket.

B1 Mounting Bracket Kit

Postage
sheet.

bolt and washer (**leave loose**
on bottom, screw in bolt,
firmly).



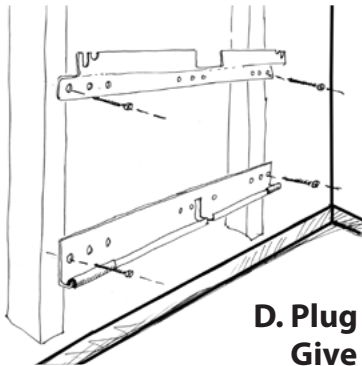
centers of
mark posi-
y, studs in
the outer-
brackets are
dence!)



. Tape template to wall at the
desired mounting height,
carefully aligning two top
holes and two bottom holes
with the centers of studs.
Be sure template diagram
is level. Use vertical dashed
lines to align template to
centerline of studs.

e studs, then use vertical
lly align holes with studs.

3. Drill a thin pilot hole (1/16"–1/8" dia) through the upper left position. If drill successfully hits wood stud, proceed to drill lower left. Drill each hole into wood about 1".
4. Now go to upper right position and drill pilot hole there that will hit a stud. If successful, proceed to lower right pilot hole. Drill each hole into wood about 1".
5. Remove template from wall.



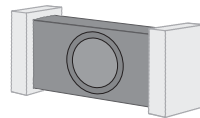
C. Mount Brackets To Wall

1. Using the pilot holes you drilled, mount brackets using the deck screws provided. At least 2" of screw thread should enter the wood of the stud. Tighten firmly, but do not over-tighten.

D. Plug In Cables, Make Settings, Give It a Test Listen, Tweak

1. Securely plug-in source interconnect and right-angle AC cord. Turn on power switch because it may be difficult to get to it once unit is mounted on the wall. (It's always okay to leave the unit powered on all the time.) Make sure your settings are where you want them before you proceed to next step.

Pro tuning tip: Listen and tweak the settings for crossover, volume and phase **BEFORE** final wall-mounting. Use the foam end caps from the packaging to temporarily wedge the unit into approximate position behind a chair or sofa. Note, once unit is wall-mounted, it will have to be UN-mounted to change these settings



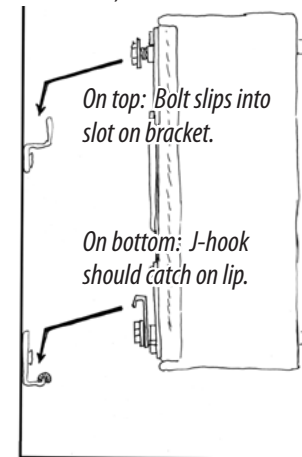
E. Hang It, then Secure It

1. Make sure the cables are routed down the back and will align with the cutouts in the brackets
2. See the illustrations below. To "hang" the SUBstage on the brackets, hold the unit about an inch directly above the brackets, then move it straight down so the lower J-hooks catch on the rubber-bushing-covered lower lip, and simultaneously the two upper bolts slip into the slots of the upper bracket. The washers should be between the bolt heads and the bracket.

3. When you are sure you've gotten it properly and securely located (that is, both J-hooks on bottom rail and both top bolts completely inserted in their notches), use an 11mm (or 7/16") open-end wrench to tighten the top bolts until tight. (As you are facing the SUBstage, tighten them counterclockwise)
4. Ta-da, congratulations! Time to enjoy the fruits of your labor. Plug in source interconnect, plug in AC, get down, get funky, get low...enjoy that acoustic rubdown!

NOTE: When mounted correctly, there will be no rattles or buzzes coming from the SUBstage, even at full throttle. BUT, keep in mind that the powerful subwoofer is now mechanically coupled to your wall. While this increases the amount of bass in the room (a wonderful thing!), **it may cause other things on the wall to vibrate (say, picture frames, for example). If so, secure them to the wall.**

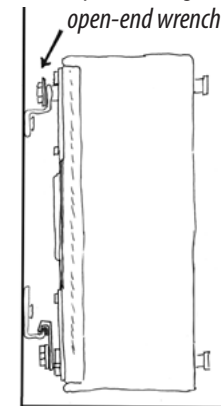
Move unit directly over the wall brackets, then slide down into place



On top: Bolt slips into slot on bracket.

On bottom: J-hook should catch on lip.

Final step: firmly tighten both top bolts using 11mm or 7/16" open-end wrench



soundmatters international
tel: 775 981.1460
fax: 775 981.1465
www.soundmatters.com



soundmatters