

MAINstageHD

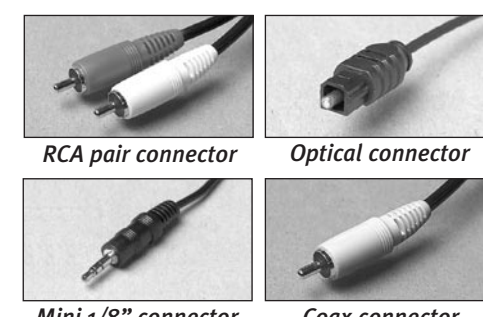
start here – quick set-up guide

STEP one

Unload and check contents

You should have: a MAINstageHD unit, owner's manual, remote control, batteries, power cord, 2m optical cable, 2m coax cable, 2m stereo 1/8" mini-jack cable, 2m stereo RCA cable, 2m stereo mini-jack-to-stereo-RCA, and three Angle-Ease™ feet + 1 extra-long threaded post.

NOTE: We have supplied the five commonly needed connecting cables. For some applications you may need to acquire additional cables/adapters (i.e., an additional mini-to-RCA cable. See steps below for hookup details.).



STEP two

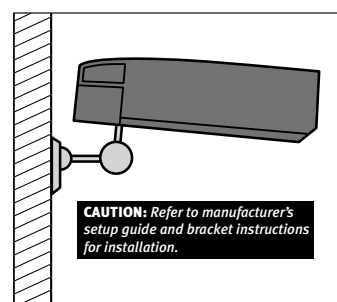
Location & position

For optimum performance and stereo imaging, the system should be placed directly in front of the listener(s).

Using the outermost holes, insert and adjust the included AngleEase™ mounting hardware to angle MAINstage so the front points directly at the listener. Mounting at or above ear level is usually best.

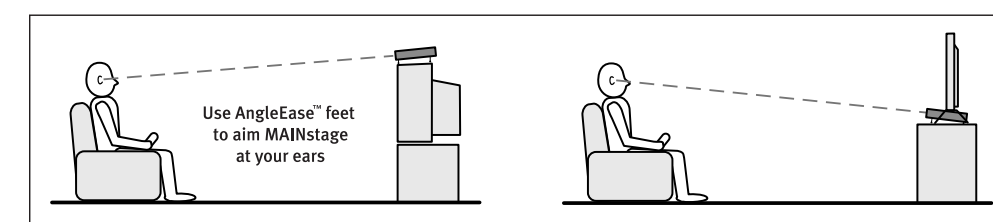
Note: MAINstage™ is magnetically shielded meaning it can be placed close to a computer monitor or television without distorting the image on your screen.

Make sure there is at least 1" of clearance above, behind, and ideally at either side of the system to allow bass to flow into the room. Refer to the Operation Guide FAQs for tips on maximizing bass response.



For discrete rear channel applications, see operations manual, contact our support department or visit [DOWNLOADS](http://www.soundmatters.com) at www.soundmatters.com

For wall-mounting, a camera-type 1/4"-20 threaded hole has been provided which is compatible with a wide-range of available brackets.



STEP three

Making your connections

The first thing to decide is how you want to use your MAINstageHD.

Pick one of the three options to determine the best way to connect your MAINstage...as with many things in life, there are some trade-offs, in this case, between Best Sound Quality and Easiest Operation. Our chart makes it easy to find the balance best suited to your tastes.

1. Simple with Best Possible Sound from All Sources

Connect the sound from all your sources (DVD, Sat/Cable, etc.) directly to the MAINstage as shown below. *Your volume and source select will now be controlled by the MAINstage's remote control.*

2. The Most Simple – but with Best Sound from DVD

Use this if you want best sound for your DVD movies, but aren't quite as concerned re: TV sound. Connect to TV as in "3. Simplest," but *also* connect the digital audio out from the DVD player. When you want to hear the digital quality sound from DVDs, just switch to the appropriate digital input on the MAINstage (at which point volume is now controlled by MAINstage remote). Be sure to switch back to the TV input (typically analog 1) once you're done.

3. Absolutely the Simplest to use

Connect all sound (audio) sources directly to your TV. Then connect the TV output to the MAINstage analog 1. No digital sound is possible. Quality is dependent upon TV audio circuitry. Two pluses are: *the volume is controlled by TV remote and there's no need to switch inputs on the MAINstage.*

Front Display	Back Panel Connection	Use This Cable	Comment
standby/mute 			There are 4 source (green) and 1 mute/standby (red) lights. Push center Source button to toggle through these 5 options (source 1-analog, source 2-analog, source 3-digital, source 4-digital, mute/standby)
source 1 - analog = solid 1 	 source 1 sensitivity adjustment	 1/8" Mini to 1/8" Mini 1/8" Mini TO RCA adapter	Connect any source with mini-headphone output. For example, iPod, portables, or computers. This is also the suggested input to directly connect to a TV. (see Mini 1/8" to RCA adapter below) – OR – Use adapter for connecting TV, satellite, VCR to analog source 1 input source 1 sensitivity adjustment While listening, adjust MAINstage sensitivity knob to achieve maximum un-distorted volume level. If source has its own volume control (i.e., TV, iPod) and you want normally use that for adjusting output level, set sensitivity <i>after</i> setting source level to its maximum normal volume position (about 70%).
source 2 - analog = solid 2 		 RCA to RCA RCA to 1/8" Mini adapter	For TV, satellite/cable, VCR, etc. Connect any source with mini-headphone output. For example, portables or computers. (see adapter at left)
source 3 - digital = solid 3 		 Coax Digital	For DVD, CD, Cable, DVR
source 4 - digital = solid 4 		 Optical Digital	For DVD, CD, satellite/cable, TiVo/DVR. Remove the clear caps on cable ends and protective covers from digital source 4 input.
stereo off / surround on 			Press the source button on the remote to toggle between surround and stereo modes. An illuminated red light indicates surround mode. When power is initially switched on, the unit defaults to surround mode. Red light on is surround.

STEP three

Making your connections (continued)

Here are important **BEST SOUND** must-read tips for ensuring your audio sources are optimized and connected properly. If your unit has digital sound, use it for best sound!

Your DVD Player



- For digital quality and 5.1 sound, you must use either the Optical or Coax Digital Audio out
- Confirm that your DVD player is optimized by using its set-up menu to:
 - turn off any built-in surround or EQ
 - make sure that BITSTREAM, Dolby® Digital 5.1 or Surround is selected, and DTS® Off (if this is an option).
 - confirm the digital audio output is On.

Your VCR



- If your VCR is a Stereo model, you can use the right and left (red and white) audio out to connect to either a separate analog input on the MAINstage. If you do not have a Stereo VCR, use your TV audio output for VCR playback through the Mainstage. Please note that there will be no surround sound to process if your VCR is not stereo. Analog surround sound information is only available in a stereo signal.

Your Cable TV with a Cable Box



- For digital quality and 5.1 sound, you must use either the Coax Digital Audio or Optical out from your cable box. If your cable box doesn't have a digital audio output, use the analog L+R (typically red and white).
- Unfortunately, some cable boxes have digital and/or audio connections on back that aren't connected internally (pretty cheesy of them isn't it!). Check with your cable provider to confirm your boxes features. You must have either a separate analog or digital audio out to connect directly to the MAINstage. If you don't you will need to connect using a VCR (see VCR or route through your TV, see Cable without a Cable Box (next))

Your Cable TV with no Cable Box (directly from wire out of the wall)



- From the TV. See TV
- Cable into VCR into MAINstage (typically better sound quality than from TV). See VCR

Your Satellite TV Receiver Box



- For digital quality and 5.1 sound, you must use either an Optical or Coax Digital Audio out from your Satellite receiver. If your satellite box doesn't have a digital audio output, use the analog L+R.

TiVo® or other Digital Video Recorder



- For best sound, if available, always use the digital audio out connection.



iPods, Portable Music Players and Clocks

- For best sound, always use a digital audio out if available.
- If using the a headphone jack connection (analog 1), typically you will want to confirm the MAINstage's back panel Sensitivity knob is turned to HI.
- As with many of today's newest electronics products, MAINstage's digital power supply may interfere with AM radio reception.



SUBstage™ Powered Subwoofer

- Connecting to the SUBstage is ultra simple. Most of the adjustments are pre-set to match the MAINstage.
- See the SUBstage Set-up Guide and Operation Manual for details.



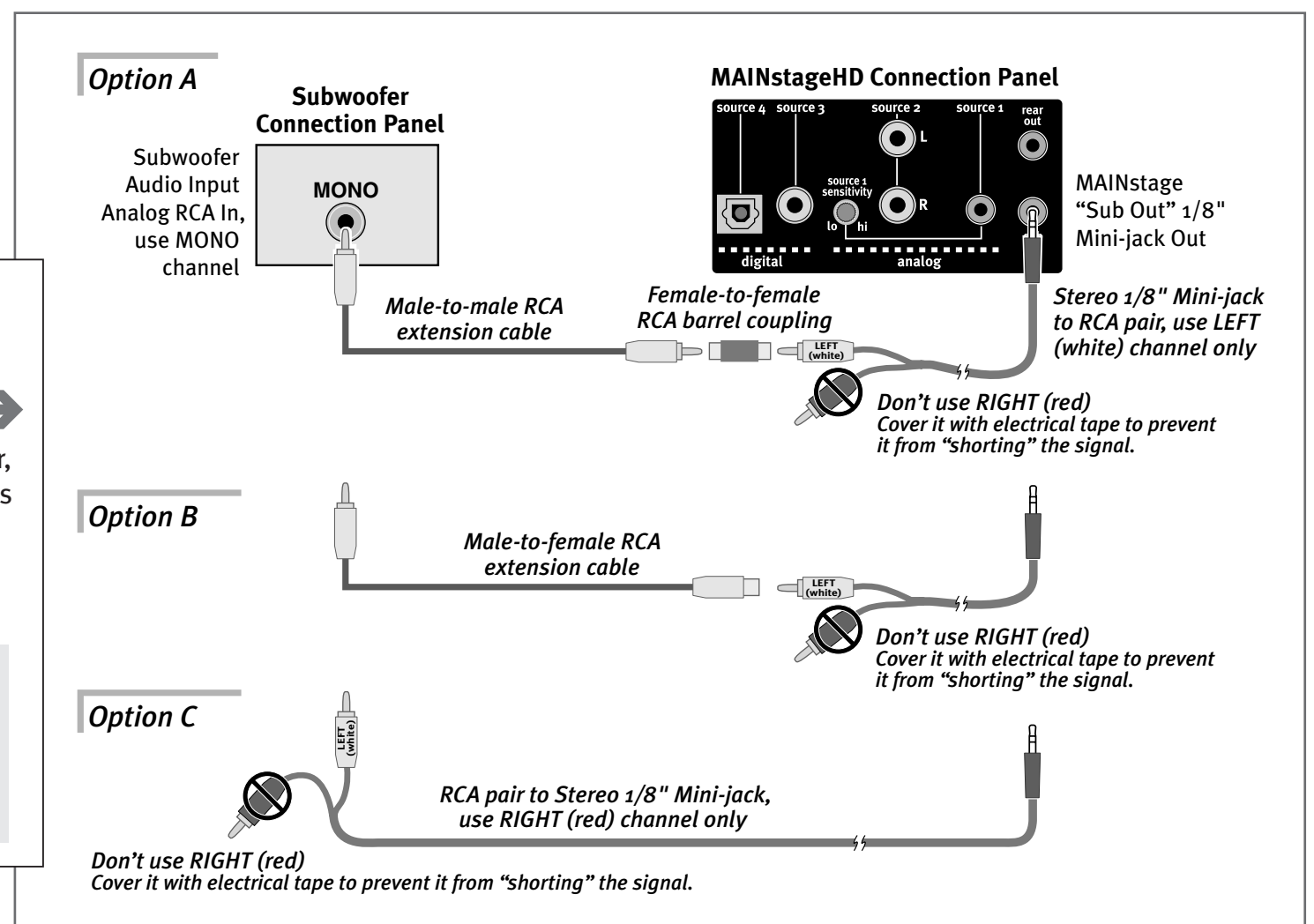
Other Powered Subwoofer

Follow the instructions to the right with Options A, B, & C for correct hookup of an optional subwoofer.

- If connecting to another brand sub-woofer, first make sure it has its own amplifier and is designed with performance and the proper connections to work with a high quality a/v system, not computer speakers.

Important note:

Connect only the LEFT RCA connector (typically WHITE) from the adapter out of the MAINstageHD to the MONO input of your subwoofer.



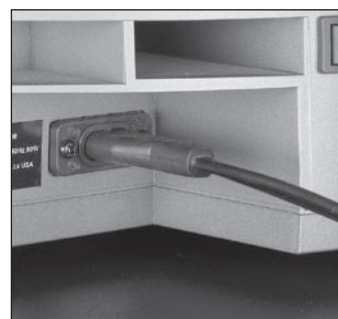
Computer

- For best sound, always use a digital audio out if available.
- If using the a headphone jack connection (analog-source 1), typically you will want to confirm the MAINstage's back panel Sensitivity knob is turned to HI.



STEP four

Connect power cord

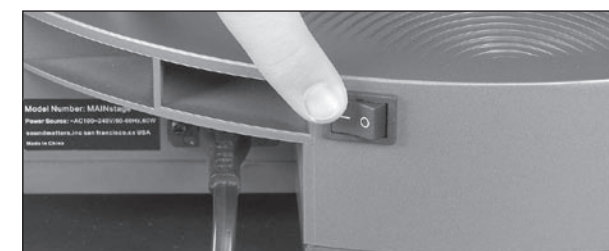


Connect to 130kHz, 95-265Vac. Make sure the power cord is very firmly pushed into the MAINstage's receptacle.

Load batteries into remote



Confirm that vacation power switch is on



On is (–).
Off is (O).

Select source and enjoy



Set bass level for internal subwoofer



Use your remote to adjust the relative bass output from the internal subwoofer. (This also controls the external subwoofers, if connected).

Additional Hook-up/Operation Tips

- When the MAINstage "turns-on" it always starts up in SURROUND mode.
- The vacation power switch should normally be left on.
- If you are using your a MAINstage as the rear channels of a discrete surround system, contact our support department or see DOWNLOADS at our website.
- If you need to convert one of your digital sources to either Coax or Optical out to match MAINstage's available input, Digital Signal Converters are available, i.e., RadioShack #15-1228.
- Some Plasma and LCD TVs emit noise which may interfere with the MAINstage's remote control operation. If you have a problem, contact soundmatters support department.

Got questions?

Contact your authorized soundmatters HD dealer or our soundmatters support department.

